

Euromold

a Nexans company



Medium voltage separable
connectors and bushings
- Interface B -

Catalogue 2007



EUROMOLD

Euromold is the leading European specialised designer, manufacturer and distributor of prefabricated cable accessories for medium voltage energy distribution. Euromold provides a complete range of accessories for underground cables: pre-moulded EPDM or silicone rubber connectors, terminations and joints for cables and epoxy bushings for transformers and switch gear, as well as a large range of cold-shrinkable terminations and joints from 12 to 42 kV.

Euromold is also the manufacturer of electrical components for the high voltage accessories of the Nexans group.

ISO 9001 Certificate

Since 1992, Euromold's commitment to quality is demonstrated by its ISO 9001 certification.

International standards

All our products meet the International standards like CENELEC HD 629.1, CENELEC EN 50180, IEC 137, IEEE 386 & 404... or country specifications. Official certificates, CESI, KEMA, ATEX... prove the conformity of our products. Long duration tests of existing or new products are continuously performed in our test fields.

Laboratory accreditation

Since June 2000, Euromold's independent ELAB laboratory obtained the BELTEST accreditation no.192-T-ISO 17025 conform with the European standards for laboratories ISO 17025 for electrical testing of medium voltage cable accessories according to the International standards IEC 61442 and HD 629.

While every care is taken to ensure that the information contained in this publication is correct, no legal responsibility can be accepted for any inaccuracy. Nexans Network Solutions N.V. - Div. Euromold reserves the right to alter or modify the characteristics of its products described in this catalogue as standards and technology evolve.

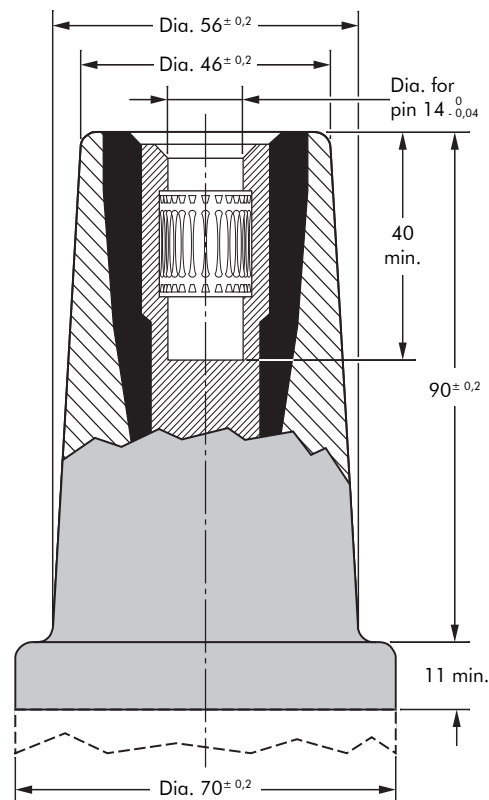
SEPARABLE CONNECTORS AND BUSHINGS INTERFACE B

Table of contents

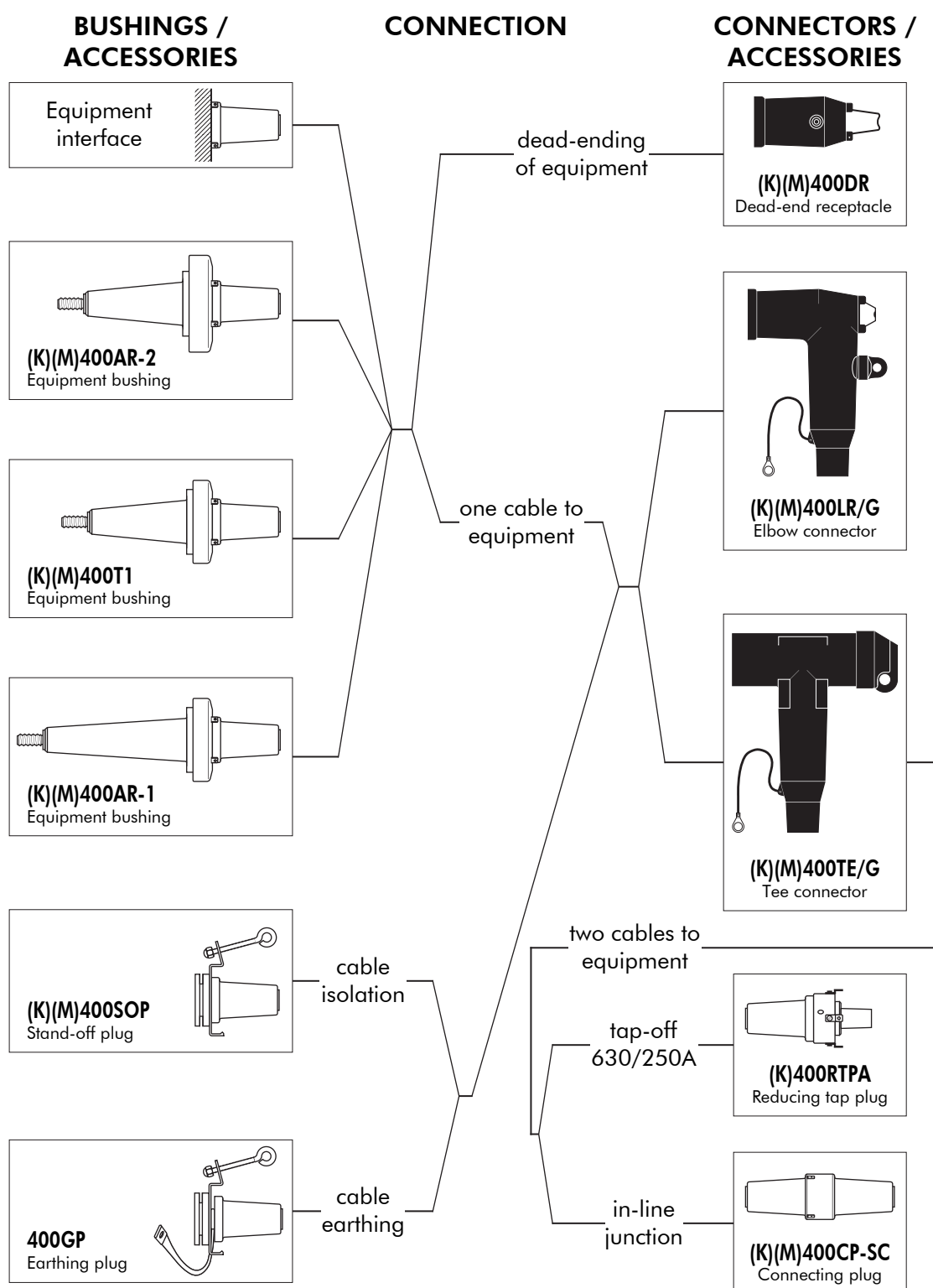
- 400LR - elbow connector
- 400TE - tee connector
- 400T1 - equipment bushing
- 400AR-1 - equipment bushing
- 400AR-2 - equipment bushing
- Fixings for equipment bushings
- Accessories
- Possible arrangements

Interface B

Dimensions according to
European CENELEC EN 50180
and 50181 (in mm).



Connecting possibilities



400LR INTERFACE B ELBOW CONNECTOR

Up to 36 kV - 400 A

Application

Separable elbow connector (plug-in type) designed to connect polymeric insulated cable to equipment (transformers, switch gear, motors...).

Technical characteristics

- The thick conductive EPDM jacket provides a total safe to touch screen which ensures safety for personnel.
- Each separable connector is tested for AC withstand and partial discharge prior to leaving the factory.

6/10	(12)	kV
6.35/11	(12)	kV
8.7/15	(17.5)	kV
12/20	(24)	kV
12.7/22	(24)	kV
18/30	(36)	kV

Design

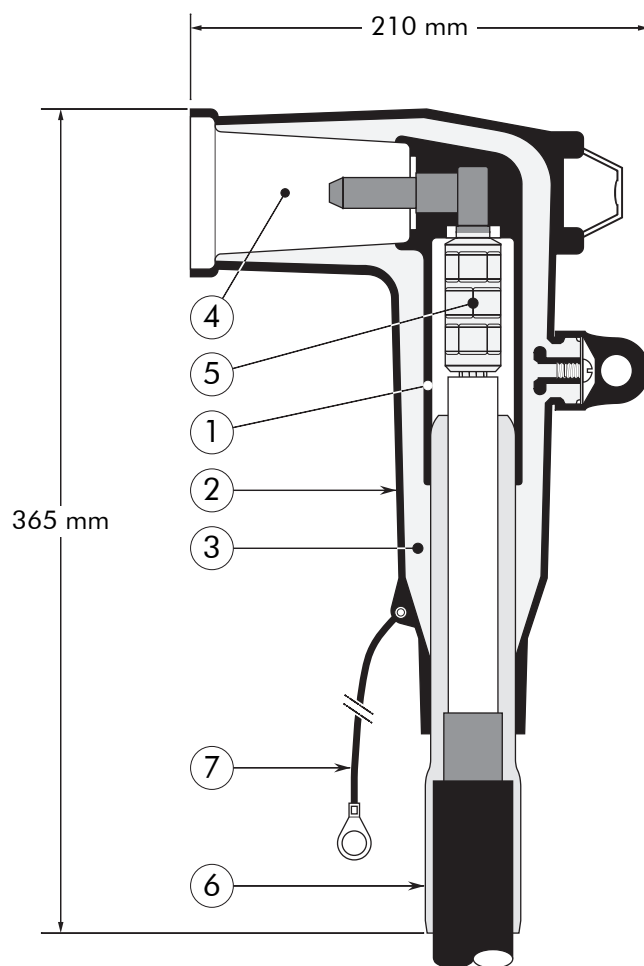
Separable connector comprising:

1. Conductive EPDM insert.
2. Conductive EPDM jacket.
3. Insulating EPDM layer moulded between the insert and the jacket.
4. Type B - 400 A interface as described by CENELEC EN 50180 and 50181.
5. Conductor connector.
6. Cable reducer.
7. Earthing lead.

The screen break design enables cable outer sheath testing without removing or dismantling the connector.

Specifications and standards

The separable connector 400LR meets the requirements of CENELEC HD 629.1.

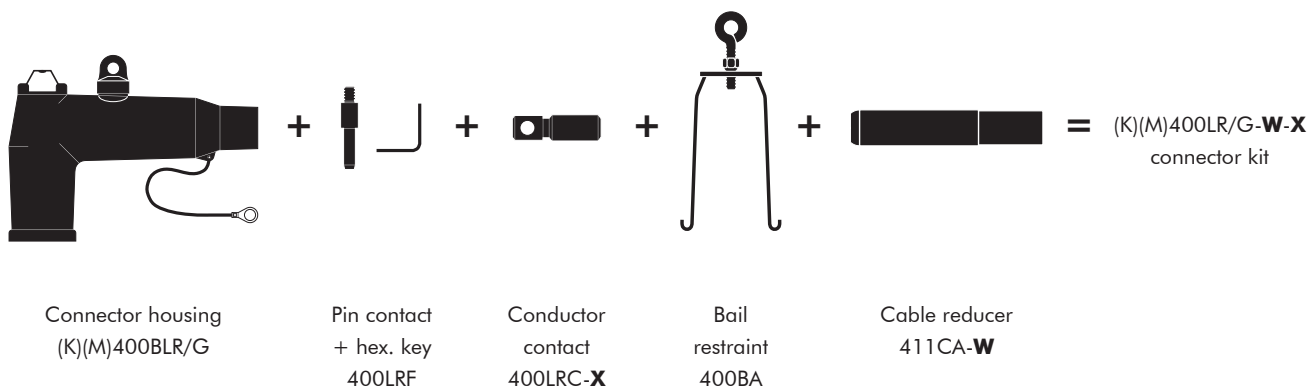


Separable connector type	Voltage Um (kV)	Current Ir (A)	Conductor sizes (mm ²)	
			min.	max.
400LR/G	12	400	50	240
K400LR/G	24	400	25	240
M400LR/G	36	400	35	185

Kit contents

The complete (K)(M)400LR/G elbow connector kit comprises the following components:

The kit also comprises lubricant, wipers, installation instructions and crimp chart.



Ordering instructions

Select the part number which gives the best centring to the cable core insulation diameter and substitute **X** using table X, according to the conductor size and type. Add a 'K' for use up to 24 kV and add an 'M' for use up to 36 kV.

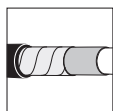
Ordering part number	Dia. over core insulation (mm)	
	min.	max.
400LR/G-11-X	12.0	17.5
400LR/G-15-X	16.0	22.0
400LR/G-19-X	20.0	26.5
400LR/G-22-X	23.5	31.0
400LR/G-25-X	26.5	32.5
400LR/G-27-X	28.5	37.5

Table X

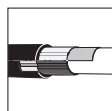
Conductor sizes (mm ²)	Aluminium		Copper
	DIN hexagonal	Deep indent	DIN hexagonal
25	-	-	25(K)M-11-2
35	35(K)M-12-2	35KM-12-1	35(K)M-11-2
50	50(K)M-12-2	50(K)M-12-1	50(K)M-11-2
70	70(K)M-12-2	70(K)M-12-1	70(K)M-11-2
95	95(K)M-12-2	95(K)M-12-1	95(K)M-11-2
120	120(K)M-12-2	120(K)M-12-1	120(K)M-11-2
150	150(K)M-12-2	150(K)M-12-1	150(K)M-11-2
185	185(K)M-12-2	185(K)M-12-1	185(K)M-11-2
240	240(K)M-12-2	240(K)M-12-1	240(K)M-11-2

Example:

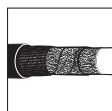
The copper wire screened cable is 12 kV, 150 mm² stranded copper with a diameter over core insulation of 23.5 mm. Order a 400LR/G-19-150(K)M-11-2 elbow connector kit.



For use with copper tape screened cables. Order: Kit MT.



For use with Alupe or C 33-226 cables. Please contact our representative.



For use with fabric tape (graphite) screened cables. Order additional semi-conductive tape (type TSC).



For use with other cable types. Please contact our representative.



For outdoor applications. Order: +MWS.



Components can be ordered individually.

400TE INTERFACE B TEE CONNECTOR

Up to 36 kV - 400 A

Application

Separable tee connector (plug-in type) designed to connect polymeric insulated cable to equipment (transformers, switch gear, motors...).

Technical characteristics

- The thick conductive EPDM jacket provides a total safe to touch screen which ensures safety for personnel.
- Each separable connector is tested for AC withstand and partial discharge prior to leaving the factory.

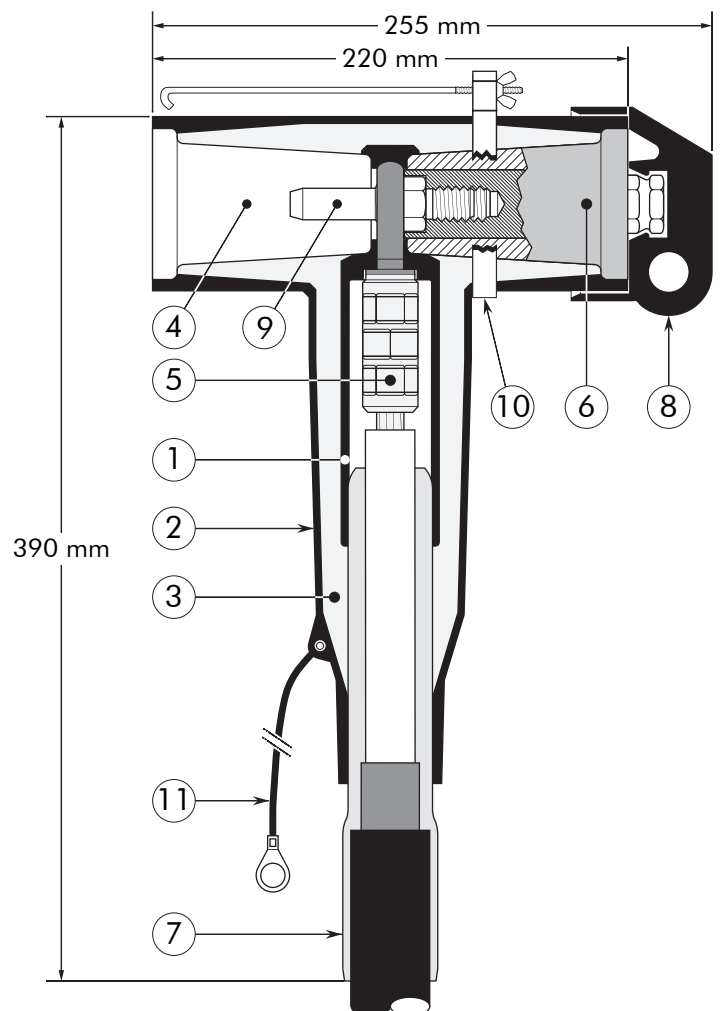
6/10	(12)	kV
6.35/11	(12)	kV
8.7/15	(17.5)	kV
12/20	(24)	kV
12.7/22	(24)	kV
18/30	(36)	kV

Design

Separable connector comprising:

1. Conductive EPDM insert.
2. Conductive EPDM jacket.
3. Insulating EPDM layer moulded between the insert and the jacket.
4. Type B - 400 A interface as described by CENELEC EN 50180 and 50181.
5. Conductor connector.
6. Basic insulating plug (with VD point).
7. Cable reducer.
8. Conductive rubber cap.
9. Clamping pin contact.
10. Bail restraint.
11. Earthing lead.

The screen break design enables cable outer sheath testing without removing or dismantling the connector.



Specifications and standards

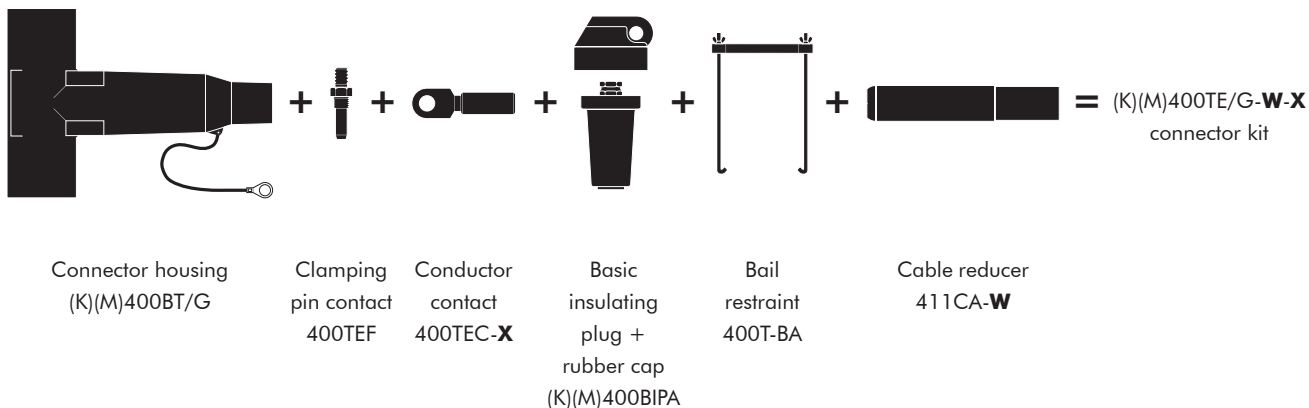
The separable connector 400TE meets the requirements of CENELEC HD 629.1.

Separable connector type	Voltage U_m (kV)	Current I_r (A)	Conductor sizes (mm ²)	
			min.	max.
400TE/G	12	400	70	240
K400TE/G	24	400	25	240
M400TE/G	36	400	35	185

Kit contents

The complete (K)(M)400TE/G elbow connector kit comprises the following components:

The kit also comprises lubricant, wipers, installation instructions and crimp chart.



Ordering instructions

Select the part number which gives the best centring to the cable core insulation diameter and substitute **X** using table X, according to the conductor size and type. Add a 'K' for use up to 24 kV and add an 'M' for use up to 36 kV.

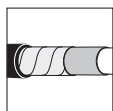
Ordering part number	Dia. over core insulation (mm)	
	min.	max.
400TE/G-11-X	12.0	17.5
400TE/G-15-X	16.0	22.0
400TE/G-19-X	20.0	26.5
400TE/G-22-X	23.5	31.0
400TE/G-25-X	26.5	32.5
400TE/G-27-X	28.5	37.5

Table X

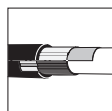
Conductor sizes (mm ²)	Aluminium		Copper
	DIN hexagonal	Deep indent	DIN hexagonal
25	-	-	25(K)M-11-2
35	35(K)M-12-2	35KM-12-1	35(K)M-11-2
50	50(K)M-12-2	50(K)M-12-1	50(K)M-11-2
70	70(K)M-12-2	70(K)M-12-1	70(K)M-11-2
95	95(K)M-12-2	95(K)M-12-1	95(K)M-11-2
120	120(K)M-12-2	120(K)M-12-1	120(K)M-11-2
150	150(K)M-12-2	150(K)M-12-1	150(K)M-11-2
185	185(K)M-12-2	185(K)M-12-1	185(K)M-11-2
240	240(K)M-12-2	240(K)M-12-1	240(K)M-11-2

Example:

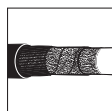
The copper wire screened cable is 24 kV, 240 mm² stranded aluminium with a diameter over core insulation of 32.1 mm. Order 3 x K400TE/G-27-240(K)M-12-2 tee connector kit.



For use with copper tape screened cables. Order: Kit MT.



For use with Alupe or C 33-226 cables. Please contact our representative.



For use with fabric tape (graphite) screened cables. Order additional semi-conductive tape (type TSC).



For use with other cable types. Please contact our representative.



For outdoor applications. Order: +MWS.



Components can be ordered individually.

400T1 /400AR-1 /400AR-2 INTERFACE B EQUIPMENT BUSHINGS

Application

For use in equipment insulated with oil fluid, typically for transformers, switch gear, capacitors...

Technical characteristics

Each bushing is tested for AC withstand and partial discharge prior to leaving the factory.

Up to 36 kV - 400 A

6/10 (12) kV
6.35/11 (12) kV
8.7/15 (17.5) kV
12/20 (24) kV
12.7/22 (24) kV
18/30 (36) kV

Design

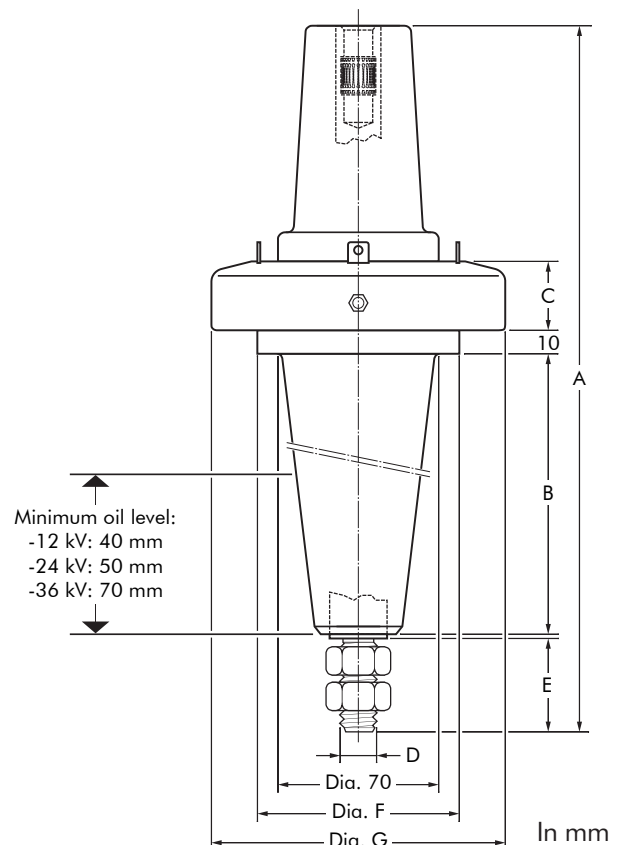
The equipment bushings are moulded epoxy insulated parts in accordance with CENELEC EN 50180.

Specifications and standards

The plug-in type equipment bushings meet the requirements of IEC 137. The (K)(M)400T1 also meets CENELEC EN 50180 .

Ordering instructions

To order the equipment bushing, specify the type. The bushings are supplied with an earth lead (/J) or an earth plate (/GS). This earth connection must be specified when ordering.
E.g. K400AR-1/J.



Equipment bushing type	Voltage Ur (kV)	Current Ir (A)	Dimensions (mm)						
			A	B	C	D	E	Dia. F	Dia. G
400T1	12	400	310	144	30	M12	22	88	128
K400T1	24	400	310	144	30	M12	22	88	128
M400T1	36	400	310	144	30	M12	22	88	128
400AR-1	12	400	380	213	30	M12	22	74	128
K400AR-1	24	400	380	213	30	M12	22	74	128
M400AR-1	36	400	380	213	30	M12	22	74	128
400AR-2	12	400	329	138	36	M16	40	100	150
K400AR-2	24	400	329	138	36	M16	40	100	150
M400AR-2	36	400	329	138	36	M16	40	100	150

FIXINGS FOR EQUIPMENT BUSHINGS INTERFACE B

400AR-2/GS bushing

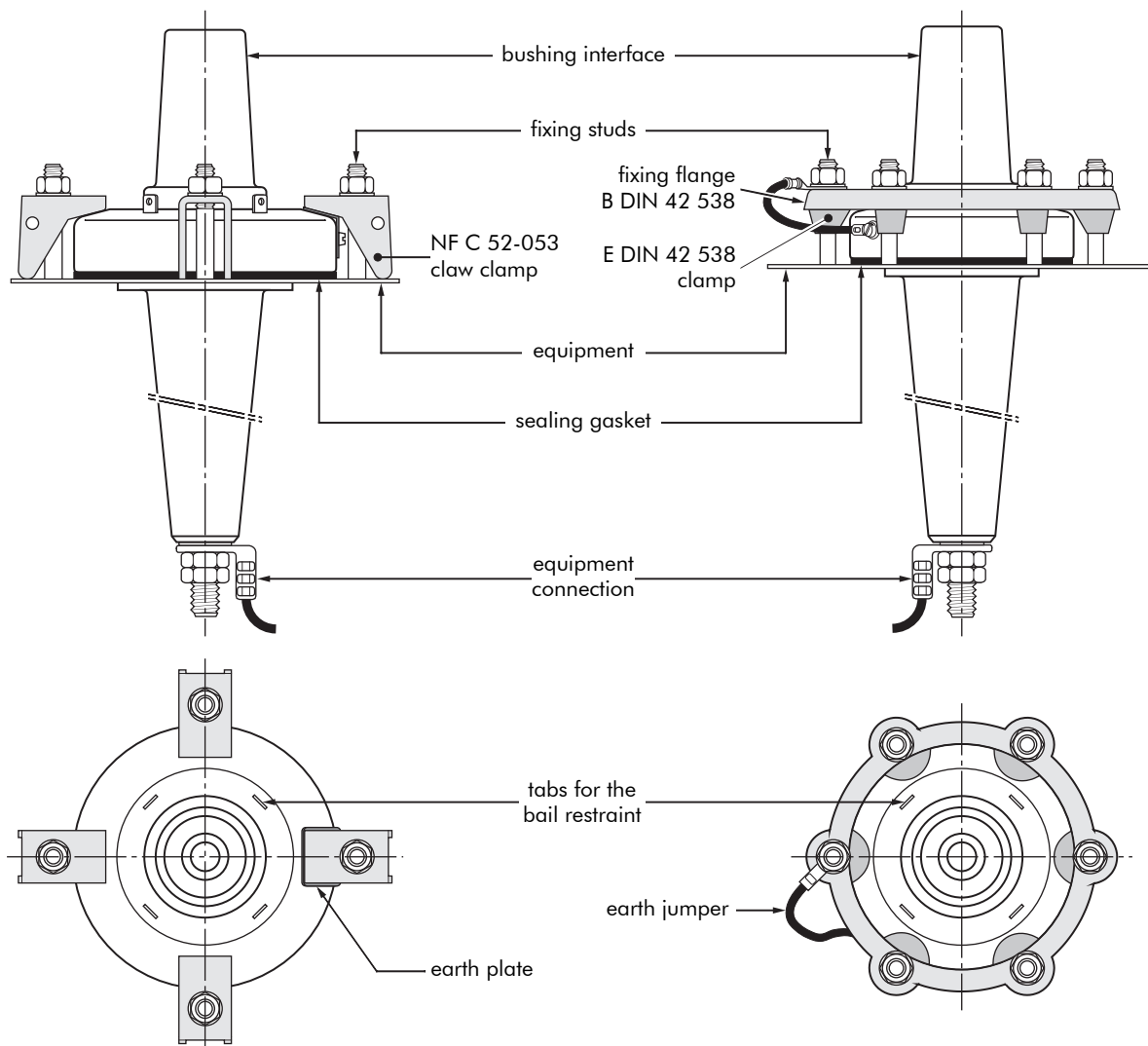
NF C 52-053

French standards.

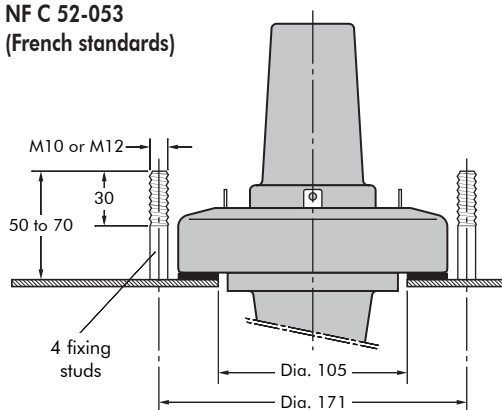
400AR-1/J and 400T1/J bushings

DIN 42 538

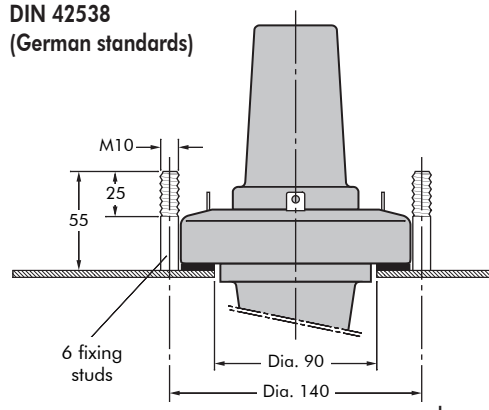
German standards.



NF C 52-053
(French standards)



DIN 42538
(German standards)



In mm

ACCESSORIES INTERFACE B

Application

For use with connectors and bushings with an interface B as described by CENELEC EN 50180 and 50181.

Technical characteristics

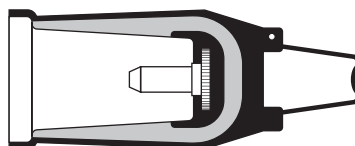
All these products, except the earthing plug, are tested for AC withstand and partial discharge prior to leaving the factory.

Up to 24 kV

6/10	(12)	kV
6.35/11	(12)	kV
8.7/15	(17.5)	kV
12/20	(24)	kV
12.7/22	(24)	kV
18/30	(36)	kV

400DR Dead-end receptacle

Fits over a bushing with a type B interface to provide 'dead-end' facility.
Is used with a 400BA restraint bail.

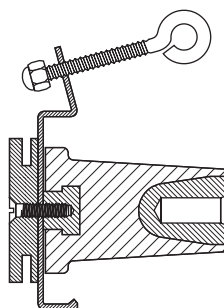


Ordering instructions

Order
400DR for 12 kV,
K400DR for 24 kV or
M400DR for 36 kV
applications.
Can be supplied with integral
earth lead: add -/G.

400SOP Stand-off plug

Is designed to support and 'dead-end' connectors with a type B interface when removed from equipment.

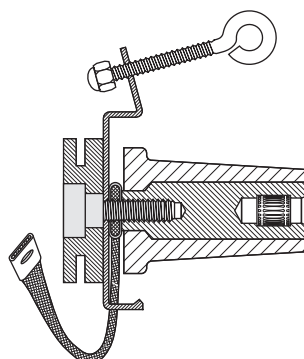


Ordering instructions

Order
400SOP for 12 kV,
K400SOP for 24 kV or
M400SOP for 36 kV
applications.

400GP Earthing plug

Is designed to support and earth connectors with a type B interface when removed from equipment.

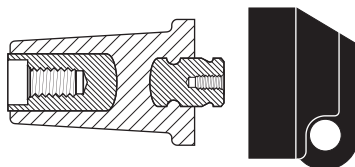


Ordering instructions

Order
400GP for 12 kV, 24 or 36 kV
applications.

400BIPA **Basic insulating plug**

Acts as a tightening nut for the 400TE tee connector kit.
The plug contains a voltage detection point.
The conductive rubber protection cap is included.

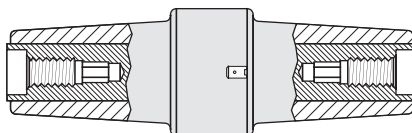


Ordering instructions

Order
400BIPA for 12 kV,
K400BIPA for 24 kV or
M400BIPA for 36 kV
applications.

400CP-SC **Connecting plug**

For connecting a 400TE and one or more 430TB, 400TB or 440TB connectors, thus creating a multiple cable connection to equipment.

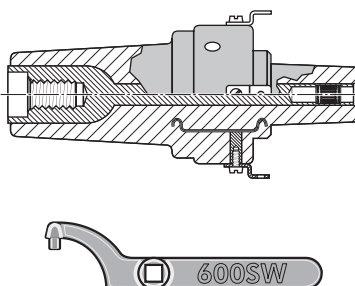


Ordering instructions

Order
400CP-SC for 12 kV,
K400CP-SC for 24 kV or
M400CP-SC for 36 kV
applications.

400RTPA **Reducing tap plug**

Provides a type A interface to a 400TE connector.
A 'C' spanner, 600SW, is used to tighten the reducing tap plug on to its mating part.

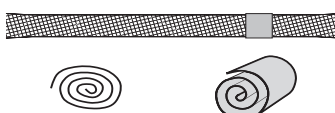


Ordering instructions

Order
400RTPA for 12 kV or
K400RTPA for 24 kV
applications.
Order 600SW for the 'C'
spanner.

Kit MT **Earthing kit for copper tape screened cables**

Contains a tinned copper braid (25 mm² - L=500 mm), a tinned copper wire for cleating and water sealing mastic.



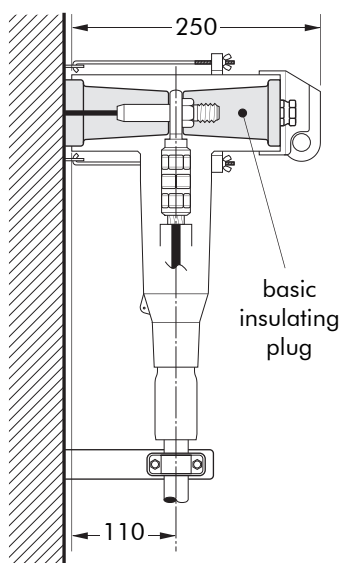
Ordering instructions

Order
Kit MT for 12 kV, 24 kV
or 36 kV applications.

POSSIBLE ARRANGEMENTS INTERFACE B

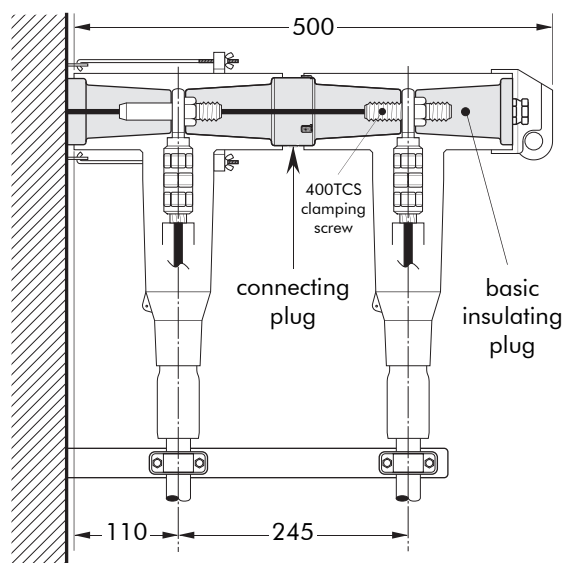
400TE/G

Single cable arrangement.
Order 400TE/G for 12 kV,
K400TE/G for 24 kV or
M400TE/G for 36 kV
applications.



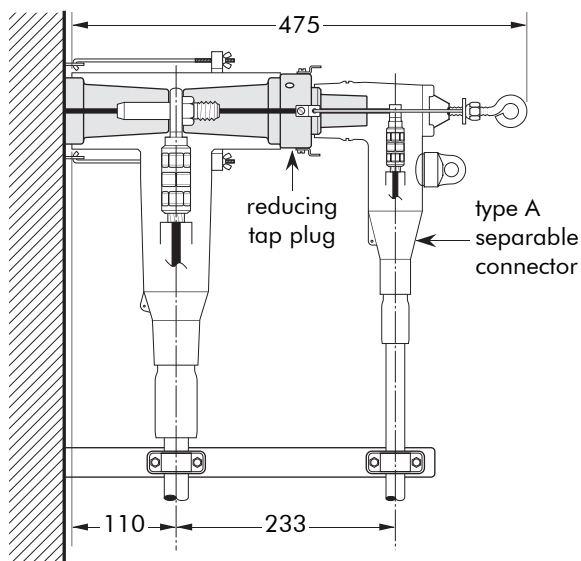
400TE/G-P2

Dual cable arrangement.
Order 400TE/G-P2 for 12 kV,
K400TE/G-P2 for 24 kV or
M400TE/G-P2 for 36 kV
applications.



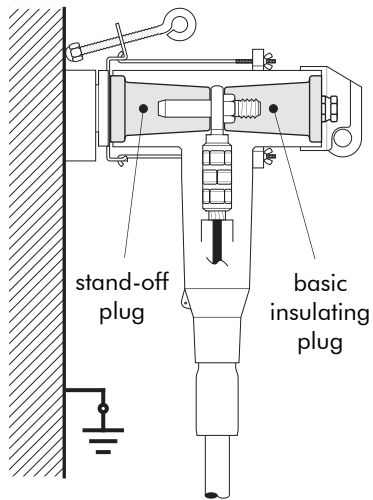
400TE/G-P4

Single cable arrangement with
tap-off.
Order 400TE/G-P4 for 12 kV
or K400TE/G-P4 for 24 kV
applications.



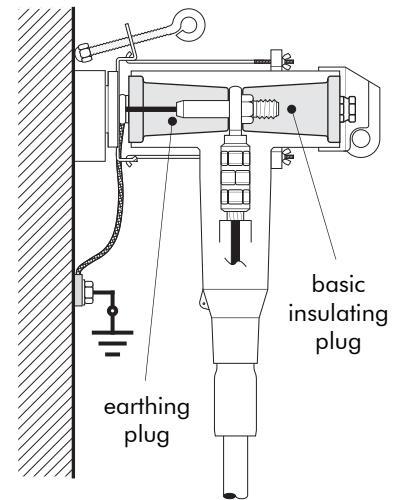
Connector on stand-off plug

Order 400SOP for 12 kV,
K400SOP for 24 kV or
M400SOP for 36 kV
applications.

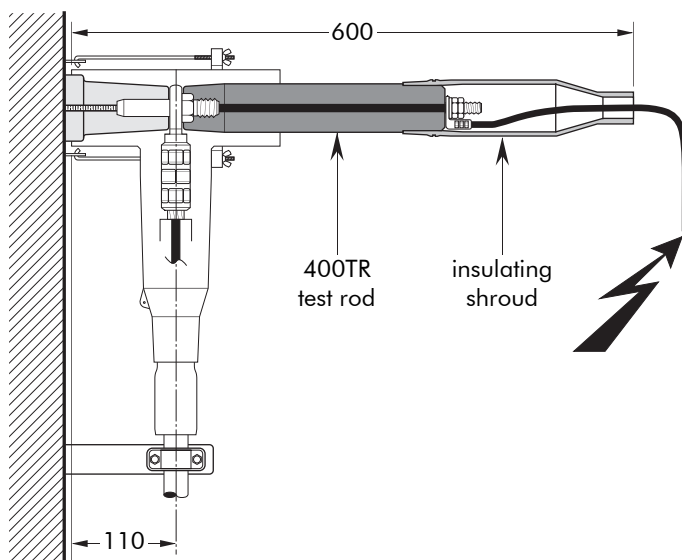


Connector on earthing plug

Order 400GP for 12 kV, 24 kV
and 36 kV applications.



Cable and equipment testing.



In mm

Additional catalogue information on power cable accessories
is available by contacting us at the address below:

┌ Distributed by:

└

Euromold
a Nexans company

Nexans Network Solutions N.V. - Div. Euromold • Zuid III, Industrielaan 12, B-9320 Erembodegem
Tel.: +32 (0)53 85 02 11 • Fax: +32 (0)53 83 10 13 • www.nexans.com • info.euromold@nexans.com

Catalogue also available on CD-ROM